



Krüger & Salecker
 Maschinenbau GmbH & Co. KG
 Nieland 1, 23611 Bad Schwartau, Germany
 Fon: +49 (451) 388 605 0
 Fax: +49 (451) 388 605 999
 Mail: info@kands.org

Navigation:
 Latitude 53° 55' 21" N
 Longitude 10° 40' 01" O

 **EXCELLENCE IN ENGINEERING**
 MADE IN GERMANY



Get your products in
 good shape!



Cereal Moulding Machines

for cereal or muesli bars, bites, clusters or balls



Moulding Machines

for flat bottom products made from pliable mixes



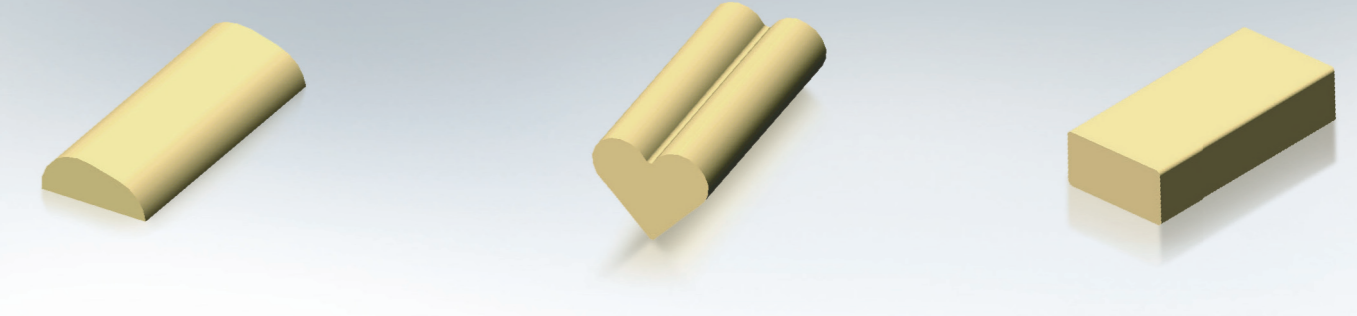
Rolling Machines

for spherical products made from pliable mixes



Extruder

for processing pliable mixes into rope



GFT/GFW

The machines are designed to process cereal-based products. Various types of binder agents can be used to form the cereal mix into shape - directly, gently and efficiently - using a moulding station, without any cut and waste. The unique technology offers versatile options of moulding motifs. Due to a very fast changeover time, production can switch from round to rectangular items within minutes. In comparison to a conventional slab former, this product line stands out due to its compact size and intuitive operating interface.

MFT/MFW

State of the art flat bottom moulding machines. Various types of pliable mixes can be used to form products into unlimited shapes with a flat bottom. With more than 60 years' experience, our proven designed machines offer the best performance, durability and ease of operation. The changeover of the moulding roller is a simple one man job with no special tools required. Various options are available to satisfy customer needs.

ARM/VRH

A product line consisting of rolling machines that work with two or three rollers are suitable for processing various pliable mixes into spherical products. The available rolling machines range from motor-driven, manually actuated machines to fully automatic controlled systems. Our latest development, the patented VRH technology, provides the greatest production capability on the market. The machines are selected based on mixture consistency and can be customized to fit into the desired production line.

MFS/EXS

The extrusion machine product line is used to process pliable mixes into rope. The fast replacement system for the outlet nozzle minimizes machine downtimes. Various rope shapes can be produced using different nozzle geometries. A cutting system can be optionally used to cut ropes into customized items.

GFT 0201 - 0401

- + tabletop machine
- + start up or pilot plant machine
- + working width: 200mm and 400mm
- + dimensions: approx. 1600 x 1500 x 1200 (LxWxH in mm)
- + output, e.g.: bar (90x30x15mm) - up to 11,520 pcs/h



MFT 0100 - 0400

- + tabletop machines
- + for small to medium production capacities
- + working width: 100mm - 400mm
- + dimensions: approx. 900 x 1200 x 800 (LxWxH in mm)
- + output, e.g.: (8g product) - up to 400 kg/h



ARM 0252

- + semi-automatic tabletop machine
- + for small capacity
- + working width: 250mm
- + dimensions: approx. 500 x 350 x 450 (LxWxH in mm)
- + output, e.g.: (Ø18mm) - up to 7,800 pcs/h at 10 strokes/min



MFS 0050

- + tabletop machine
- + for small production capacity
- + working width: up to Ø25mm
- + dimensions: approx. 400 x 300 x 700 (LxWxH in mm)
- + output, e.g.: (Ø18mm rope) - up to 100 kg/h

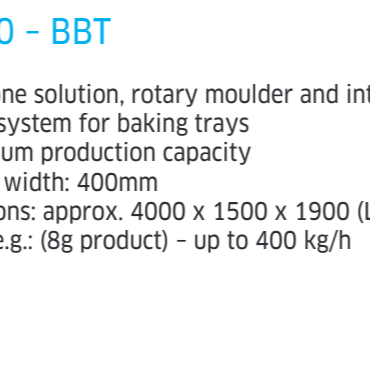


GFT 0401 - BBT 0400

- + two-in-one solution, cereal moulder and integrated feeding system for baking trays
- + fully automatic operation controlled by PLC
- + working width: 400mm
- + dimensions: approx. 4200 x 1700 x 1900 (LxWxH in mm)
- + output, e.g.: bar (90x30x15mm) - up to 11,520 pcs/h

MFT 0400 - BBT

- + two-in-one solution, rotary moulder and integrated feeding system for baking trays
- + for medium production capacity
- + working width: 400mm
- + dimensions: approx. 4000 x 1500 x 1900 (LxWxH in mm)
- + output, e.g.: (8g product) - up to 400 kg/h



MFW 0410 - 1210

- + heavy duty, stand-alone machine
- + working width: 400mm - 1200mm
- + dimensions: approx. 2700 x 2400 x 2600 (LxWxH in mm)
- + output, e.g.: (8g product) - up to 4,675 kg/h

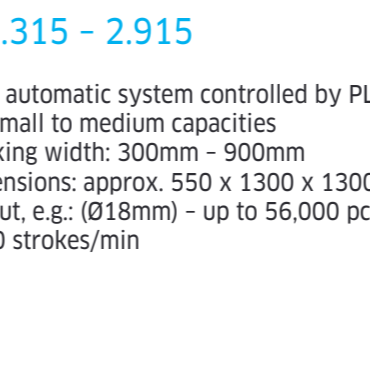
VRH 0200 - 1200

- + patented technology
- + for very high capacity
- + working width: 400mm - 1200mm
- + dimensions: approx. 3200 x 1950 x 2600 (LxWxH in mm)
- + output, e.g.: (Ø18mm) - up to 400,000 pcs/h



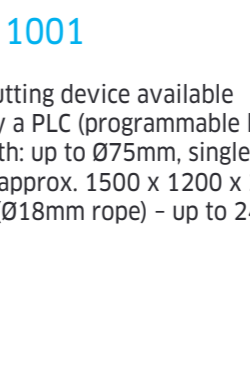
ARM 2.315 - 2.915

- + fully automatic system controlled by PLC for small to medium capacities
- + working width: 300mm - 900mm
- + dimensions: approx. 550 x 1300 x 1300 (LxWxH in mm)
- + output, e.g.: (Ø18mm) - up to 56,000 pcs/h at 20 strokes/min



MFS 0201 - 1001

- + integrated cutting device available
- + controlled by a PLC (programmable logic control)
- + working width: up to Ø75mm, single or multi nozzle
- + dimensions: approx. 1500 x 1200 x 2100 (LxWxH in mm)
- + output, e.g.: (Ø18mm rope) - up to 240 kg/h, single nozzle



EXS 0100

- + heavy duty stand-alone machine
- + double screw extruder
- + working width: Ø5 - 60mm
- + dimensions: 1200 x 800 x 1600 (LxWxH in mm)
- + output, e.g.: (Ø18mm rope) - up to 600 kg/h

GFW 0345 - 1045

- + heavy duty, stand-alone machine
- + for high production capacity
- + working width: 300mm - 1000mm
- + dimensions: approx. 2000 x 3300 x 2300 (LxWxH in mm)
- + output, e.g.: bar (90x30x15mm) - up to 36,000 pcs/h

